



BRIDAL  
COLLECTION

D.J.BITZAN

FINE DIAMONDS • JEWELRY

[www.djbitzan.com](http://www.djbitzan.com)



# REAL LOVE REAL DIAMONDS

When you become a #BitzanBride, you join a community who chose D.J. Bitzan to be their jeweler for life. Our family of couples means the world to us because each love story is an important piece of our long-standing history. Our happy Bitzan Bride family is also the reason we have been voted Best Jewelry Store in Central MN 7 years running!



## WHY BECOME A BITZAN BRIDE?

### Confidence That You Have a Superior Diamond

With a D.J. Bitzan ring, you can be certain you are presenting a genuine, real diamond of the highest quality.

### The 5-Star D.J. Bitzan Experience

Our no-pressure, non-commission showroom ensures you will always feel like a VIP when shopping in our store.

### Unique Styles to Match Her Personality

From simple solitaires to sparkling double halos, we have over 700 rings in our showroom for you to select from.

### The Best Forever Free Warranty for Miles

At no cost to you, you are covered for diamond loss, bent or broken bands, prong wear or breakage, and loose stones.

### An On-Site Shop of Expert Goldsmiths

Our expert goldsmiths work right in our store, so you know that your ring is safe in our care at all times.

### Working with the Best Jeweler in Central MN

We have been humbled to win the St. Cloud Times "Best Of" award for Best Jewelry Store in Central MN for 7 years running!

**D.J. BITZAN**  
FINE DIAMONDS • JEWELRY

Photo Credit: TEM Photography





# 1 THE HALO is still a great way to make any stone appear larger

Halo settings can follow the same shape as the center stone or they can be different, such as a floral halo encircling a round diamond.



- A. 1 carat tw semi-mount ring (emerald center stone 0.85-1.20 ct.)
- B. 1 3/8 carat tw semi-mount ring (round center stone 0.85-1.20 ct.)
- C. 1 3/8 carat tw semi-mount ring (pear center stone 1.25-1.75 ct.)
- D. 1 3/8 carat tw semi-mount ring (emerald center stone 0.85-1.20 ct.)
- E. 1 5/8 carat tw semi-mount ring (princess center stone 1.25-1.75 ct.)
- F. 1 7/8 carat tw semi-mount ring (round center stone 1.65-2.35 ct.)
- G. 1 1/5 carat tw semi-mount ring (round center stone 1.65-2.35 ct.)

\*Center stone sold separately, come see our collection Above styles can be customized, please call us





A



B



D



C



F



E

- A. 1/4 carat tw semi-mount ring  
(round center stone 1.25-1.75 ct.)
- B. 3/4 carat tw semi-mount ring  
(marquise center stone 1.00-1.40 ct.)
- C. 1/2 carat tw semi-mount ring  
(round center stone 1.25-1.75 ct.)
- D. 5/8 carat tw semi-mount ring  
(marquise center stone 0.85-1.20 ct.)
- E. 1/2 carat tw semi-mount ring  
(round center stone 0.85-1.20 ct.)
- F. 1/3 carat tw semi-mount ring  
(emerald center stone 0.85-1.20 ct.)
- G. 3/8 carat tw semi-mount ring  
(oval center stone 0.60-0.85 ct.)
- H. 1/2 carat tw semi-mount ring  
(round center stone 0.85-1.20 ct.)



G

\*Center stone sold separately, come see our collection  
Above Styles can be customized, please call us



H





A\*



B†

## THE BOLD HALO adds extra sparkle and uniqueness

The trendy single or double halo can add extra dazzle and drama to a center stone, making it appear as much as a half a carat larger.



C\*



D†



E†

*BDO*  
collection

A. 3/4 carat tw semi-mount ring  
(cushion center stone 0.85-1.20 ct.)

B. 1 carat tw engagement ring  
(1/2 carat oval cut center)

C. 1 carat tw semi-mount ring  
(oval center stone 1.25-1.75 ct.)

D. 1 carat tw engagement ring  
(1/2 carat marquise cut center)

E. 5/8 carat tw engagement ring  
(1/4 carat oval cut center)

F. 3/4 carat tw engagement ring  
(1/2 carat oval cut center)

G. 1/2 carat tw semi-mount ring  
(round center stone 0.85-1.20 ct.)

\*Center stone sold separately, come see our collection

† Engagement ring includes center stone

Above Styles can be customized, please call us



F†



G\*





A



B

## 2 YELLOW GOLD is making a major return

More brides are looking back to past generations and choosing yellow gold for sentimental reasons and how it connects with jewelry that their mothers and grandmothers have worn.



C



D



E



F

- A. 7/8 carat tw semi-mount ring  
(princess center stone 0.85-1.20 ct.)
- B. 1 carat tw semi-mount ring  
(emerald center stone 0.85-1.20 ct.)
- C. 7/8 carat tw semi-mount ring  
(oval center stone 0.90-1.25 ct.)
- D. 3/4 carat tw semi-mount ring  
(oval center stone 1.00-1.40 ct.)
- E. 5/8 carat tw semi-mount ring  
(emerald center stone 0.85-1.20 ct.)
- F. 1 carat tw semi-mount ring  
(oval center stone 1.00-1.40 ct.)
- G. 1 carat tw semi-mount ring  
(pear center stone 0.85-1.20 ct.)

\*Center stone sold separately, come see our collection  
Above Styles can be customized, please call us



G





A



B



C



D



E



F

- A. 2 1/10 carat tw semi-mount ring  
(round center stone 1.25-1.75 ct.)
- B. 1 7/8 carat tw semi-mount ring  
(princess center stone 1.25-1.75 ct.)
- C. 1 1/5 carat tw semi-mount ring  
(cushion center stone 0.95-1.50 ct.)
- D. 2 1/2 carat tw semi-mount ring  
(round center stone 1.65-2.35 ct.)
- E. 1 1/2 carat tw semi-mount ring  
(round center stone 1.65-2.35 ct.)
- F. 1 1/3 carat tw semi-mount ring  
(round center stone 0.85-1.20 ct.)

\*Center stone sold separately, come see our collection  
Above Styles can be customized, please call us





A\*



B\*



C



D



E



F

A. 7/8 carat tw semi-mount ring  
(oval center stone 1.50-2.00 ct.)

B. 5/8 carat tw semi-mount ring  
(round center stone 1.50-2.00 ct.)

C. 1/2 carat tw semi-mount ring  
(pear center stone 0.60-0.85 ct.)

D. 2 carat tw semi-mount ring  
(round center stone 2.15-2.90 ct.)

E. 1/5 carat tw semi-mount ring  
(round center stone 0.85-1.20 ct.)

F. 1/3 carat tw semi-mount ring  
(round center stone 0.85-1.20 ct.)

G. 7/8 carat tw semi-mount ring  
(cushion center stone 0.85-1.20 ct.)

\*Center stone sold separately, come see our collection  
Above Styles can be customized, please call us  
\* Denotes 18kt Gold



G





A



B



C



D

## THE PERFECT SETTING

Not only does the warm glow of this classic metal look good on everyone but there are many ways to incorporate yellow gold into your stack. It plays nicely with most any other metal.



E



F



G

- A. 1/3 carat tw semi-mount ring (pear center stone 0.90-1.25 ct.)
- B. 1/6 carat tw semi-mount ring (oval center stone 0.65-0.90 ct.)
- C. 5/8 carat tw semi-mount ring (oval center stone 1.00-1.40 ct.)
- D. 1/3 carat tw semi-mount ring (round center stone 0.90-1.25 ct.)
- E. 3/4 carat tw semi-mount ring (pear center stone 0.85-1.20 ct.)
- F. 1/2 carat tw semi-mount ring (oval center stone 1.00-1.40 ct.)
- G. 1/2 carat tw semi-mount ring (princess center stone 0.85-1.20 ct.)

\*Center stone sold separately, come see our collection Above Styles can be customized, please call us





- A. 1 carat tw semi-mount ring  
(oval center stone 1.00-1.40 ct.)
- B. 3/4 carat tw engagement ring  
(3/8 carat oval cut center)
- C. 5/8 carat tw semi-mount ring  
(oval center stone 1.65-2.35 ct.)
- D. 5/8 carat tw semi-mount ring  
(oval center stone 1.00-1.40 ct.)
- E. 3/4 carat tw semi-mount ring  
(oval center stone 1.00-1.40 ct.)
- F. 3/4 carat tw semi-mount ring  
(oval center stone 1.00-1.40 ct.)
- G. 7/8 carat tw engagement ring  
(1/2 carat oval cut center)



\*Center stone sold separately, come see our collection  
 † Engagement ring includes center stone  
 Above Styles can be customized, please call us





A†



B\*

### 3 THE OVAL CUT is a trend that is not slowing down

The elongated shape is unique, contemporary and gracefully slims the finger, making it a top choice among brides.



C\*



E\*



D\*

*BDO*  
collection



F†



G†

- A. 1/2 carat tw engagement ring (1/3 carat oval cut center)
- B. 1/3 carat tw semi-mount ring (oval center stone 0.60-0.85 ct.)
- C. 1/6 carat tw semi-mount ring (oval center stone 0.85-1.20 ct.)
- D. 1/3 carat tw semi-mount ring (oval center stone 0.85-1.20 ct.)
- E. 5/8 carat tw semi-mount ring (oval center stone 0.85-1.20 ct.)
- F. 5/8 carat tw engagement ring (1/2 carat oval cut center)
- G. 5/8 carat tw engagement ring (3/8 carat oval cut center)

\*Center stone sold separately, come see our collection  
† Engagement ring includes center stone  
Above Styles can be customized, please call us  
Some styles available in different carat weights





# 4 THE PEAR SHAPE is having a moment

One of the hottest trends in engagement rings, pear-shaped diamonds (also known as teardrop) are a great choice because the pear shape from the top down view makes the stone appear larger.



- A. 3/4 carat tw semi-mount ring (pear center stone 1.00-1.40 ct.)
- B. 3/4 carat tw engagement ring (1/2 carat pear cut center)
- C. 1/2 carat tw semi-mount ring (pear center stone 1.00-1.40 ct.)
- D. 5/8 carat tw semi-mount ring (pear center stone 1.00-1.40 ct.)
- E. 3/4 carat tw semi-mount ring (pear center stone 1.00-1.40 ct.)
- F. 1/4 carat tw semi-mount ring (pear center stone 1.00-1.40 ct.)
- G. 1/3 carat tw semi-mount ring (pear center stone 1.00-1.40 ct.)



\*Center stone sold separately, come see our collection  
 † Engagement ring includes center stone  
 Above Styles can be customized, please call us  
 Some styles available in different carat weights





A'



B'



C'



D'



E'



F'



G'

*BDO*  
collection

- A. 7/8 carat tw engagement ring (1/2 carat pear cut center)
- B. 3/4 carat tw engagement ring (1/2 carat pear cut center)
- C. 1/6 carat tw semi-mount ring (pear center stone 0.85-1.20 ct.)
- D. 3/4 carat tw engagement ring (1/2 carat pear cut center)
- E. 5/8 carat tw engagement ring (1/4 carat pear cut center)
- F. 3/4 carat tw engagement ring (3/8 carat pear cut center)
- G. 1 carat tw engagement ring (1/2 carat pear cut center)

\*Center stone sold separately, come see our collection  
 †Engagement ring includes center stone  
 Above Styles can be customized, please call us  
 Some styles available in different carat weights





# 5 FANCY-SHAPED CENTER STONES

While round-cut diamonds still take the top spot, elongated marquise, princess, square-cut emerald and other fancy-shaped center stones are popular with brides looking for something more unique.



- A. 1 carat tw engagement ring (5/8 carat marquise cut center)
- B. 5/8 carat tw engagement ring (1/4 carat marquise cut center)
- C. 3/4 carat tw engagement ring (1/2 carat marquise cut center)
- D. 5/8 carat tw engagement ring (1/2 carat marquise cut center)
- E. 5/8 carat tw semi-mount ring (marquise center stone 1.00-1.40 ct.)
- F. 3/4 carat tw engagement ring (1/2 carat princess cut center)
- G. 1/2 carat tw semi-mount ring (cushion center stone 0.40-0.60 ct.)
- H. 1 carat tw engagement ring (1/2 carat princess cut center)



\*Center stone sold separately, come see our collection  
 † Engagement ring includes center stone  
 Above Styles can be customized, please call us  
 Some styles available in different carat weights





A'



B'



C'



E'



D'



F'

*BDO*  
collection



G'



H'

- A. 5/8 carat tw engagement ring (1/2 carat emerald cut center)
- B. 1/2 carat tw engagement ring (1/4 carat emerald cut center)
- C. 3/4 carat tw semi-mount ring (emerald center stone 0.85-1.20 ct.)
- D. 1 1/5 carat tw semi-mount ring (emerald center stone 1.25-1.75 ct.)
- E. 5/8 carat tw engagement ring (1/4 carat emerald cut center)
- F. 3/8 carat tw engagement ring (1/4 carat emerald cut center)
- G. 7/8 carat tw engagement ring (1/2 carat emerald cut center)
- H. 1/3 carat tw semi-mount ring (emerald center stone 0.85-1.20 ct.)

\*Center stone sold separately, come see our collection

! Engagement ring includes center stone

Above Styles can be customized, please call us

Some styles available in different carat weights





## 6 THREE-STONE RINGS are a perennial favorite

The three stones represent the past, present and future, but the look is getting a modern update with smaller side stones becoming more popular.

*BDO*  
collection



- A. 1 carat tw engagement ring  
(1/2 carat emerald cut center)
- B. 1 carat tw engagement ring  
(3/4 carat round cut center)
- C. 1 carat tw engagement ring  
(3/8 carat pear cut center)
- D. 1 1/2 carat tw engagement ring  
(3/4 carat oval cut center)
- E. 1 carat tw engagement ring  
(3/8 carat round cut center)
- F. 1 carat tw engagement ring  
(3/8 carat round cut center)
- G. 1 carat tw engagement ring  
(3/8 carat oval cut center)



† Engagement ring includes center stone  
Some styles available in different carat weights





A†



B†



C†



D†



E†



G\*



F†

*BDO*  
collection



H†



J†



K†

A. 3/4 carat tw engagement ring  
(1/2 carat emerald cut center)

B. 7/8 carat tw engagement ring  
(1/2 carat oval cut center)

C. 5/8 carat tw engagement ring  
(1/2 carat oval cut center)

D. 3/4 carat tw engagement ring  
(1/2 carat oval cut center)

E. 5/8 carat tw engagement ring  
(1/2 carat round cut center)

F. 7/8 carat tw engagement ring  
(1/2 carat round cut center)

G. 1/3 carat tw semi-mount ring  
(cushion center stone 0.85-1.20 ct.)

H. 5/8 carat tw engagement ring  
(1/2 carat emerald cut center)

J. 3/4 carat tw engagement ring  
(1/2 carat marquise cut center)

K. 3/4 carat tw engagement ring  
(1/2 carat round cut center)

\*Center stone sold separately, come see our collection

†Engagement ring includes center stone

Some styles available in different carat weights





A'



B'



C'

# 7 THE ROUND CUT still outshines all others

The classic round cut maximizes the sparkle of the stone and is still the most popular engagement ring style out there. What's new this year is all about being unique and setting your stone in a gorgeous pave band will give it just the custom look you want.



D'



F'



E'



G'



H'



J'



- A. 3/4 carat tw engagement ring (1/2 carat round cut center)
- B. 3/4 carat tw engagement ring (1/2 carat round cut center)
- C. 1 carat tw engagement ring (1/2 carat round cut center)
- D. 1/2 carat tw semi-mount ring (round center stone 1.00-1.40 ct.)
- E. 1/4 carat tw semi-mount ring (round center stone 0.85-1.20 ct.)
- F. 5/8 carat tw semi-mount ring (round center stone 0.85-1.20 ct.)
- G. 5/8 carat tw engagement ring (1/2 carat round cut center)
- H. 5/8 carat tw engagement ring (1/2 carat round cut center)
- J. 3/8 carat tw semi-mount ring (round center stone 0.85-1.20 ct.)

\*Center stone sold separately, come see our collection  
 † Engagement ring includes center stone  
 Above Styles can be customized, please call us  
 Some styles available in different carat weights





- A. 5/8 carat tw semi-mount ring (round center stone 1.50-2.00 ct.)
- B. 5/8 carat tw semi-mount ring (round center stone 1.50-2.00 ct.)
- C. 1/2 carat tw semi-mount ring (round center stone 0.85-1.20 ct.)
- D. 3/4 carat tw semi-mount ring (round center stone 0.85-1.20 ct.)
- E. 3/4 carat tw semi-mount ring (round center stone 0.85-1.20 ct.)
- F. 1/2 carat tw semi-mount ring (round center stone 0.85-1.20 ct.)
- G. 1/4 carat tw semi-mount ring (round center stone 1.00-1.40 ct.)
- H. 1/3 carat tw semi-mount ring (round center stone 0.85-1.20 ct.)

\*Center stone sold separately, come see our collection  
 Above Styles can be customized, please call us  
 \* Denotes 18kt Gold





A



B



C



D



E



F

*IDO*  
collection

A. 3/4 carat tw engagement ring  
(3/8 carat round cut center)

B. 5/8 carat tw engagement ring  
(1/2 carat round cut center)

C. 7/8 carat tw engagement ring  
(1/2 carat round cut center)

D. 3/4 carat tw engagement ring  
(1/2 carat round cut center)

E. 5/8 carat tw engagement ring  
(1/2 carat round cut center)

F. 1 carat tw engagement ring  
(3/4 carat round cut center)

G. 7/8 carat tw engagement ring  
(1/2 carat round cut center)

H. 3/4 carat tw engagement ring  
(1/2 carat emerald cut center)

J. 5/8 carat tw engagement ring  
(3/8 carat round cut center)



G



H



J

† Engagement ring includes center stone  
Wedding band sold separately, call us for pricing  
Some styles Available in different center sizes





A



B



C



D

# 8 STUNNING, MODERN BRIDAL SETS

More couples are opting for the brilliant idea of purchasing an engagement ring and wedding band as a set that is perfectly coordinated and meant to go together. Plus bridal sets offer value for the money. Buying two or more rings at the same time - instead of buying them separately - is likely to save money.



E



F



G

- A. 5/8 carat tw engagement ring (1/3 carat round cut center)
- B. 3/4 carat tw engagement ring (1/2 carat round cut center)
- C. 1 carat tw engagement ring (1/2 carat oval cut center)
- D. 1/3 carat tw engagement ring (1/4 carat round cut center)
- E. 7/8 carat tw engagement ring (1/2 carat emerald cut center)
- F. 3/4 carat tw engagement ring (3/8 carat pear cut center)
- G. 5/8 carat tw engagement ring (3/8 carat oval cut center)

\* Engagement ring includes center stone  
 Wedding band sold separately, call us for pricing





*BDO*  
collection

- A. 7/8 carat tw engagement ring  
(1/2 carat oval cut center)
- B. 3/8 carat tw engagement ring  
(1/5 carat round cut center)
- C. 1/2 carat tw engagement ring  
(1/4 carat oval cut center)
- D. 3/4 carat tw engagement ring  
(1/4 carat princess cut center)
- E. 3/4 carat tw engagement ring  
(1/4 carat princess cut center)
- F. 3/8 carat tw engagement ring  
(1/4 carat round cut center)
- G. 5/8 carat tw engagement ring  
(1/4 carat round cut center)
- H. 3/8 carat tw engagement ring  
(1/4 carat oval cut center)



† Engagement ring includes center stone  
Wedding band sold separately, call us for pricing  
Some styles available in different center sizes





A



B

## BRIDAL SETS

Meant for each other - choose an engagement ring that matches with the perfect wedding band to look like one elegant piece of jewelry.



C



D



E



F



G



H



J

- A. 1/3 carat tw engagement ring  
(1/5 carat round cut center)
- B. 1/2 carat tw engagement ring  
(1/4 carat round cut center)
- C. 1/2 carat tw engagement ring  
(1/3 carat round cut center)
- D. 3/8 carat tw engagement ring  
(1/4 carat round cut center)
- E. 1/2 carat tw engagement ring  
(1/4 carat round cut center)
- F. 1/3 carat tw engagement ring  
(1/4 carat round cut center)
- G. 1/2 carat tw engagement ring  
(1/4 carat pear cut center)
- H. 1/2 carat tw engagement ring  
(1/4 carat emerald cut center)
- J. 1/2 carat tw engagement ring  
(1/4 carat round cut center)

† Engagement ring includes center stone  
Wedding band sold separately, call us for pricing  
Some styles available in different center sizes





A



B



C

# 9 LOVEBRIGHT ENGAGEMENT RINGS

Our new collection has been meticulously crafted to experience bigger looks and exceptional value - petite diamonds surround the center diamond to add an extra layer of sparkle and brilliance.



D



E



F



LOVEBRIGHT

- A. 3/4 carat tw engagement ring
- B. 1 1/2 carat tw engagement ring
- C. 1 carat tw engagement ring
- D. 1/2 carat tw engagement ring
- E. 1/2 carat tw engagement ring
- F. 5/8 carat tw engagement ring
- G. 5/8 carat tw engagement ring
- H. 3/4 carat tw engagement ring



G

Engagement ring includes center stones halo



H





B



A



C



D



E



F



G



LOVEBRIGHT



H

- A. 1/2 carat tw engagement ring
- B. 1/3 carat tw engagement ring
- C. 1/2 carat tw engagement ring
- D. 5/8 carat tw engagement ring
- E. 3/4 carat tw engagement ring
- F. 1/2 carat tw engagement ring
- G. 1 1/10 carat tw engagement ring
- H. 1 carat tw engagement ring

Engagement ring includes center stones halo





A



B



C

## THE LOVEBRIGHT SOLITAIRE

Simple and elegant, this solitaire-look is timeless.



D



E



F



G



LOVEBRIGHT

- A. 1 carat tw engagement ring
- B. 3/4 carat tw engagement ring
- C. 1/2 carat tw engagement ring
- D. 1/2 carat tw engagement ring
- E. 1 carat tw engagement ring
- F. 1 carat tw engagement ring
- G. 1 carat tw engagement ring
- H. 3/4 carat tw engagement ring
- J. 1/2 carat tw engagement ring

Engagement ring includes center stones halo  
Some styles available in different carat weights



H



J





# THE LOVEBRIGHT THREE-STONE

These modern classics are a wonderful choice for the bride-to-be.



F



H



LOVEBRIGHT

- A. 1/2 carat tw engagement ring
- B. 3/4 carat tw engagement ring
- C. 5/8 carat tw engagement ring
- D. 3/4 carat tw engagement ring
- E. 1 carat tw engagement ring
- F. 3/4 carat tw engagement ring
- G. 1/3 carat tw engagement ring
- H. 1/2 carat tw engagement ring
- J. 1/2 carat tw engagement ring



J

Engagement ring includes center stones halo  
Some styles available in different carat weights





A



B

## THE LOVEBRIGHT THREE-STONE

The Lovebright Collection is a beautiful option for couples looking to share their love without compromising on the expression of love.



C



D



E



F



G



LOVEBRIGHT

- A. 3/4 carat tw engagement ring
- B. 5/8 carat tw engagement ring
- C. 1/2 carat tw engagement ring
- D. 3/4 carat tw engagement ring
- E. 3/8 carat tw engagement ring
- F. 7/8 carat tw engagement ring
- G. 1/3 carat tw engagement ring
- H. 1/2 carat tw engagement ring
- J. 7/8 carat tw engagement ring

Engagement ring includes center stones halo



H



J





A



B



C



E



D

## THE EMERALD CUT LOOK FOR LESS!

These beautiful settings feature brilliant baguette diamonds that create a look of a large rectangular emerald-cut diamond.



F



G



- A. 3/4 carat tw engagement ring
- B. 5/8 carat tw diamond ring
- C. 1 1/6 carat tw diamond ring
- D. 1/2 carat tw engagement ring
- E. 1 carat tw diamond ring
- F. 1 carat tw engagement ring
- G. 1/2 carat tw diamond ring
- H. 1/2 carat tw engagement ring



H

Some styles available in different carat weights





# 10 ETERNITY & MULTI-STONE BANDS

One of the top choices for wedding and anniversary bands. They're also ideal as meaningful gifts for a special occasion or to mark a major milestone in life.



- A. 1 carat tw 5stone halo band
- B. 1 carat tw 5stone halo band
- C. 1 carat tw 5stone halo band
- D. 1 carat tw 5stone halo band
- E. 5/8 carat tw diamond band
- F. 5/8 carat tw diamond band
- G. 1 carat tw diamond band
- H. 1/2 carat tw diamond band
- J. 1 carat tw diamond band
- K. 1 carat tw curve band
- L. 1/6 carat tw diamond band
- M. 1/3 carat tw diamond band
- N. 1/2 carat tw diamond band



Some styles available in different carat weights





A



B



C



D



E



F



G



H



J



K



L

- A. 3 carat tw eternity diamond band
- B. 3 carat tw eternity diamond band
- C. 3 carat tw eternity diamond band
- D. 3 carat tw eternity diamond band
- E. 1 1/4 carat tw diamond band
- F. 1 carat tw 11 stones band
- G. 1/4 carat tw pave band
- H. 1 carat tw 7 stones band
- J. 1 carat tw milgrain band
- K. 1 1/2 carat tw 5 stones band
- L. 1 carat tw channel-set band

Some styles available in different carat weights





A



B



C



D



E



F



G

- A. 1/2 carat tw diamond insert
- B. 3/8 carat tw diamond insert
- C. 1/3 carat tw diamond insert
- D. 1/4 carat tw diamond insert
- E. 1/2 carat tw diamond insert
- F. 1/2 carat tw diamond insert
- G. 3/8 carat tw diamond insert
- H. 1/3 carat tw diamond insert



H





A



B



C



D

# 11 DIAMOND RING ENHANCERS

Ring jackets are made to be paired with an engagement ring to create a lot more sparkle and a more dramatic stacked silhouette. They're a great way to give an original engagement ring a brand new look.



E<sup>†</sup> with Engagement Ring



E



F

- A. 1/2 carat tw diamond insert
- B. 1/3 carat tw diamond insert
- C. 1/3 carat tw diamond insert
- D. 1/3 carat tw diamond insert
- E. 1/2 carat tw diamond insert
- F. 1/3 carat tw diamond insert

<sup>†</sup>Engagement ring sold separately, call us for pricing





A



B



C



D



E



F

### *Engagement Wraps e<sup>3</sup> Enhancers*

- A. 1/2 carat tw diamond insert
- B. 1/2 carat tw diamond insert
- C. 1/2 carat tw diamond insert
- D. 1/2 carat tw diamond insert
- E. 3/4 carat tw diamond insert
- F. 5/8 carat tw diamond insert
- G. 1/2 carat tw diamond insert



G







A



B



C



D

## A GREAT WAY TO UP THE GLIMMER.

These beautiful diamond enhancers feature brilliant baguette and round-cut diamonds combining for a bigger look.



E<sup>1</sup> with Engagement Ring



E

### *Engagement Wraps & Enhancers*

- A. 1/2 carat tw diamond insert
- B. 1/3 carat tw diamond insert
- C. 1 carat tw diamond insert
- D. 3/4 carat tw diamond insert
- E. 5/8 carat tw diamond insert
- F. 5/8 carat tw diamond insert



F

<sup>1</sup>Engagement ring sold separately, call us for pricing





A



B



C



D



E

## Chevron Bands



F



G



H



J



K



L

- A. 1/4 carat tw chevron band
- B. 1/10 carat tw chevron band
- C. 1/3 carat tw chevron band
- D. 1/3 carat tw chevron band
- E. 1/4 carat tw chevron band
- F. 1/8 carat tw chevron band
- G. 3/8 carat tw chevron band
- H. 1/5 carat tw chevron band
- J. 1/5 carat tw chevron band
- K. 1/4 carat tw chevron band
- L. 1/4 carat tw chevron band
- M. 1/6 carat tw chevron band
- N. 1/6 carat tw chevron band
- P. 1/10 carat tw chevron band
- Q. 1/5 carat tw chevron band



M



N



P



Q







# 12 STACKING BANDS are trending in bridal jewelry

Match your engagement ring with a complimentary band to create a unique look and get some extra bling. Choose from a wide range of styles to find the perfect fit for you - and add as many as you like.



## Stackable Bands



- A. 1/5 carat tw stack band
- B. 1/10 carat tw stack band
- C. 1/4 carat tw stack band
- D. 1/6 carat tw twisted band
- E. 1/10 carat tw stack band
- F. 1/10 carat tw stack band
- G. 3/8 carat tw stack band
- H. 1/10 carat tw stack band
- J. 1/5 carat tw stack band
- K. 1/10 carat tw stack band
- L. 1/2 carat tw stack band
- M. 1/6 carat tw stack band
- N. 1/10 carat tw stack band
- P. 1/10 carat tw stack band
- Q. 1/5 carat tw twisted band





# AND DON'T FORGET THE BRIDAL PARTY!

Give your bridesmaid squad something they're going to wear and treasure forever.



## *Gifts from the Heart*

- A. 1/8 carat tw diamond pendant
- B. 1/5 carat tw diamond pendant
- C. 1/4 carat tw diamond pendant
- D. Pearl & diamond pendant
- E. Pearl & diamond pendant
- F. 1/10 carat tw round station necklace
- G. 1/3 carat tw halo pendant
- H. 1/3 carat tw halo earrings
- J. 3/8 carat tw heart earrings
- K. 1/5 carat tw heart pendant
- L. 1/6 carat tw kite drop earrings
- M. 1/6 carat tw round drop earrings
- N. 1/6 carat tw star drop earrings
- P. 1/6 carat tw round station bracelet
- Q. 1/6 carat tw heart station bracelet
- R. 1/6 carat tw kite station bracelet

\* Denotes 10kt Gold





# CUSTOM DESIGN

If you want a piece that is truly one-of-a-kind, why not design it from your dreams? From unique engagement rings to updated heirlooms, we make it easy to turn your vision into reality with our wide variety of custom jewelry options.

## STEP 1 - CONCEPT

Your idea is discussed and diligently reviewed by one of our skilled designers. We will walk you through the custom process from beginning to end, reviewing all design aspects as we go.

## STEP 2 - CAD IMAGING

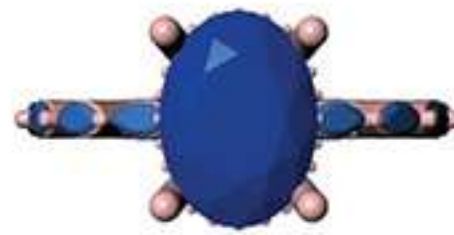
Your design concept comes to life in a vibrant photo-realistic CAD (computer aided design) presentation for you to approve.



CAD IMAGES



FINAL RING



## STEP 3 - CRAFTSMANSHIP

Upon CAD approval, impeccable detail and craftsmanship will bring to life your treasured one-of-a-kind piece.

## STEP 4 - VOILA

You receive a new heirloom to be cherished for generations to come!

Photo Credit: TEM Photography



# D.J. BITZAN

FINE DIAMONDS • JEWELRY

Located Across the Street from Scheels,  
Just West of Crossroads Mall, Waite Park  
203 Waite Ave N | (320) 251-4812

Find us on:

[Facebook.com/djbitzanjewelers](https://www.facebook.com/djbitzanjewelers)

[instagram.com/djbitzan](https://www.instagram.com/djbitzan)

Please see our website for current store hours



SCAN ON YOUR SMART PHONE OR LOG ONTO  
[www.djbitzan.com](http://www.djbitzan.com)



## COME SEE OUR COLLECTION OF LOOSE DIAMONDS



Round



Princess



Emerald



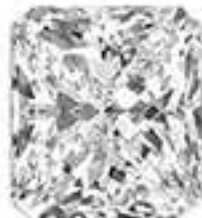
Asscher



Marquise



Oval



Radiant



Pear



Heart



Cushion

Jewelry images shown may have been enlarged or retouched to show details. Prices shown may change without notice due to market conditions and fluctuations. Diamond carat total weight (ctw) represents the approximate carat total weight of all the diamonds set, unless noted. Diamond total weights may vary between 0.01 and 0.07 ct. All pendants priced with chains. Natural colored gemstones may have been treated or enhanced by heating, irradiation, oiling, filling, or diffusion. Photographic, typographical, and print errors are subject to correction. Some styles featured in the catalog may not be immediately available, but may be ordered.