

# BRIDAL COLLECTION



---

**POWELL JEWELRY**

LUXURY JEWELRY + CUSTOM ENGAGEMENT RINGS



# 12 ENGAGEMENT RING TRENDS TO SAY "I DO" TO!

Whether you have the ring of your dreams in mind or are just starting to collect ideas, these latest trends will help you decide.



A



B



C



D



E



F

- A. 7/8 carat tw semi-mount ring (oval center stone 1.00-1.40 ct.)
- B. 2 carat tw semi-mount ring (princess center stone 2.75-3.50 ct.)
- C. 3/4 carat tw semi-mount ring (round center stone 0.85-1.20 ct.)
- D. 5/8 carat tw semi-mount ring (oval center stone 0.60-0.85 ct.)
- E. 5/8 carat tw semi-mount ring (oval center stone 1.00-1.40 ct.)
- F. 5/8 carat tw semi-mount ring (cushion center stone 0.85-1.20 ct.)
- G. 3/8 carat tw semi-mount ring (emerald center stone 0.85-1.20 ct.)



G

\*Center stone sold separately, come see our collection  
Above styles can be customized, please call us





# 1 THE HALO is still a great way to make any stone appear larger

Halo settings can follow the same shape as the center stone or they can be different, such as a floral halo encircling a round diamond.



- A. 1 carat tw semi-mount ring (emerald center stone 0.85-1.20 ct.)
- B. 1 3/8 carat tw semi-mount ring (round center stone 0.85-1.20 ct.)
- C. 1 3/8 carat tw semi-mount ring (pear center stone 1.25-1.75 ct.)
- D. 1 3/8 carat tw semi-mount ring (emerald center stone 0.85-1.20 ct.)
- E. 1 5/8 carat tw semi-mount ring (princess center stone 1.25-1.75 ct.)
- F. 1 7/8 carat tw semi-mount ring (round center stone 1.65-2.35 ct.)
- G. 1 1/5 carat tw semi-mount ring (round center stone 1.65-2.35 ct.)

\*Center stone sold separately, come see our collection Above styles can be customized, please call us





A



B



D



C



F



E

- A. 1/4 carat tw semi-mount ring  
(round center stone 1.25-1.75 ct.)
- B. 3/4 carat tw semi-mount ring  
(marquise center stone 1.00-1.40 ct.)
- C. 1/2 carat tw semi-mount ring  
(round center stone 1.25-1.75 ct.)
- D. 5/8 carat tw semi-mount ring  
(marquise center stone 0.85-1.20 ct.)
- E. 1/2 carat tw semi-mount ring  
(round center stone 0.85-1.20 ct.)
- F. 1/3 carat tw semi-mount ring  
(emerald center stone 0.85-1.20 ct.)
- G. 3/8 carat tw semi-mount ring  
(oval center stone 0.60-0.85 ct.)
- H. 1/2 carat tw semi-mount ring  
(round center stone 0.85-1.20 ct.)



G

\*Center stone sold separately, come see our collection  
Above Styles can be customized, please call us



H





A\*



B†

## THE BOLD HALO adds extra sparkle and uniqueness

The trendy single or double halo can add extra dazzle and drama to a center stone, making it appear as much as a half a carat larger.



C\*



D†



E†

*BDO*  
collection



F†

A. 3/4 carat tw semi-mount ring  
(cushion center stone 0.85-1.20 ct.)

B. 1 carat tw engagement ring  
(1/2 carat oval cut center)

C. 1 carat tw semi-mount ring  
(oval center stone 1.25-1.75 ct.)

D. 1 carat tw engagement ring  
(1/2 carat marquise cut center)

E. 5/8 carat tw engagement ring  
(1/4 carat oval cut center)

F. 3/4 carat tw engagement ring  
(1/2 carat oval cut center)

G. 1/2 carat tw semi-mount ring  
(round center stone 0.85-1.20 ct.)



G\*

\*Center stone sold separately, come see our collection

† Engagement ring includes center stone

Above Styles can be customized, please call us





A



B

## 2 YELLOW GOLD is making a major return

More brides are looking back to past generations and choosing yellow gold for sentimental reasons and how it connects with jewelry that their mothers and grandmothers have worn.



C



D



E



F

- A. 7/8 carat tw semi-mount ring  
(princess center stone 0.85-1.20 ct.)
- B. 1 carat tw semi-mount ring  
(emerald center stone 0.85-1.20 ct.)
- C. 7/8 carat tw semi-mount ring  
(oval center stone 0.90-1.25 ct.)
- D. 3/4 carat tw semi-mount ring  
(oval center stone 1.00-1.40 ct.)
- E. 5/8 carat tw semi-mount ring  
(emerald center stone 0.85-1.20 ct.)
- F. 1 carat tw semi-mount ring  
(oval center stone 1.00-1.40 ct.)
- G. 1 carat tw semi-mount ring  
(pear center stone 0.85-1.20 ct.)

\*Center stone sold separately, come see our collection  
Above Styles can be customized, please call us



G





A



B



C



D



E



F

- A. 2 1/10 carat tw semi-mount ring  
(round center stone 1.25-1.75 ct.)
- B. 1 7/8 carat tw semi-mount ring  
(princess center stone 1.25-1.75 ct.)
- C. 1 1/5 carat tw semi-mount ring  
(cushion center stone 0.95-1.50 ct.)
- D. 2 1/2 carat tw semi-mount ring  
(round center stone 1.65-2.35 ct.)
- E. 1 1/2 carat tw semi-mount ring  
(round center stone 1.65-2.35 ct.)
- F. 1 1/3 carat tw semi-mount ring  
(round center stone 0.85-1.20 ct.)

\*Center stone sold separately, come see our collection  
Above Styles can be customized, please call us





A\*



B\*



C



D



E



F

A. 7/8 carat tw semi-mount ring  
(oval center stone 1.50-2.00 ct.)

B. 5/8 carat tw semi-mount ring  
(round center stone 1.50-2.00 ct.)

C. 1/2 carat tw semi-mount ring  
(pear center stone 0.60-0.85 ct.)

D. 2 carat tw semi-mount ring  
(round center stone 2.15-2.90 ct.)

E. 1/5 carat tw semi-mount ring  
(round center stone 0.85-1.20 ct.)

F. 1/3 carat tw semi-mount ring  
(round center stone 0.85-1.20 ct.)

G. 7/8 carat tw semi-mount ring  
(cushion center stone 0.85-1.20 ct.)

\*Center stone sold separately, come see our collection  
Above Styles can be customized, please call us  
\* Denotes 18kt Gold



G





A



B



C



D

## THE PERFECT SETTING

Not only does the warm glow of this classic metal look good on everyone but there are many ways to incorporate yellow gold into your stack. It plays nicely with most any other metal.



E



F



G

- A. 1/3 carat tw semi-mount ring (pear center stone 0.90-1.25 ct.)
- B. 1/6 carat tw semi-mount ring (oval center stone 0.65-0.90 ct.)
- C. 5/8 carat tw semi-mount ring (oval center stone 1.00-1.40 ct.)
- D. 1/3 carat tw semi-mount ring (round center stone 0.90-1.25 ct.)
- E. 3/4 carat tw semi-mount ring (pear center stone 0.85-1.20 ct.)
- F. 1/2 carat tw semi-mount ring (oval center stone 1.00-1.40 ct.)
- G. 1/2 carat tw semi-mount ring (princess center stone 0.85-1.20 ct.)

\*Center stone sold separately, come see our collection  
Above Styles can be customized, please call us





- A. 1 carat tw semi-mount ring  
(oval center stone 1.00-1.40 ct.)
- B. 3/4 carat tw engagement ring  
(3/8 carat oval cut center)
- C. 5/8 carat tw semi-mount ring  
(oval center stone 1.65-2.35 ct.)
- D. 5/8 carat tw semi-mount ring  
(oval center stone 1.00-1.40 ct.)
- E. 3/4 carat tw semi-mount ring  
(oval center stone 1.00-1.40 ct.)
- F. 3/4 carat tw semi-mount ring  
(oval center stone 1.00-1.40 ct.)
- G. 7/8 carat tw engagement ring  
(1/2 carat oval cut center)



\*Center stone sold separately, come see our collection  
 † Engagement ring includes center stone  
 Above Styles can be customized, please call us





A†



B\*

### 3 THE OVAL CUT is a trend that is not slowing down

The elongated shape is unique, contemporary and gracefully slims the finger, making it a top choice among brides.



C\*



E\*



D\*

*BDO*  
collection



F†



G†

- A. 1/2 carat tw engagement ring (1/3 carat oval cut center)
- B. 1/3 carat tw semi-mount ring (oval center stone 0.60-0.85 ct.)
- C. 1/6 carat tw semi-mount ring (oval center stone 0.85-1.20 ct.)
- D. 1/3 carat tw semi-mount ring (oval center stone 0.85-1.20 ct.)
- E. 5/8 carat tw semi-mount ring (oval center stone 0.85-1.20 ct.)
- F. 5/8 carat tw engagement ring (1/2 carat oval cut center)
- G. 5/8 carat tw engagement ring (3/8 carat oval cut center)

\*Center stone sold separately, come see our collection  
 † Engagement ring includes center stone  
 Above Styles can be customized, please call us  
 Some styles available in different carat weights





# 4 THE PEAR SHAPE is having a moment

One of the hottest trends in engagement rings, pear-shaped diamonds (also known as teardrop) are a great choice because the pear shape from the top down view makes the stone appear larger.



- A. 3/4 carat tw semi-mount ring (pear center stone 1.00-1.40 ct.)
- B. 3/4 carat tw engagement ring (1/2 carat pear cut center)
- C. 1/2 carat tw semi-mount ring (pear center stone 1.00-1.40 ct.)
- D. 5/8 carat tw semi-mount ring (pear center stone 1.00-1.40 ct.)
- E. 3/4 carat tw semi-mount ring (pear center stone 1.00-1.40 ct.)
- F. 1/4 carat tw semi-mount ring (pear center stone 1.00-1.40 ct.)
- G. 1/3 carat tw semi-mount ring (pear center stone 1.00-1.40 ct.)



\*Center stone sold separately, come see our collection  
 † Engagement ring includes center stone  
 Above Styles can be customized, please call us  
 Some styles available in different carat weights





A'



B'



C'



D'



E'



F'



G'

*BDO*  
collection

- A. 7/8 carat tw engagement ring (1/2 carat pear cut center)
- B. 3/4 carat tw engagement ring (1/2 carat pear cut center)
- C. 1/6 carat tw semi-mount ring (pear center stone 0.85-1.20 ct.)
- D. 3/4 carat tw engagement ring (1/2 carat pear cut center)
- E. 5/8 carat tw engagement ring (1/4 carat pear cut center)
- F. 3/4 carat tw engagement ring (3/8 carat pear cut center)
- G. 1 carat tw engagement ring (1/2 carat pear cut center)

\*Center stone sold separately, come see our collection  
 †Engagement ring includes center stone  
 Above Styles can be customized, please call us  
 Some styles available in different carat weights





A†



B†

# 5 FANCY-SHAPED CENTER STONES

While round-cut diamonds still take the top spot, elongated marquise, princess, square-cut emerald and other fancy-shaped center stones are popular with brides looking for something more unique.



C†



E\*



D†



F†



- A. 1 carat tw engagement ring (5/8 carat marquise cut center)
- B. 5/8 carat tw engagement ring (1/4 carat marquise cut center)
- C. 3/4 carat tw engagement ring (1/2 carat marquise cut center)
- D. 5/8 carat tw engagement ring (1/2 carat marquise cut center)
- E. 5/8 carat tw semi-mount ring (marquise center stone 1.00-1.40 ct.)
- F. 3/4 carat tw engagement ring (1/2 carat princess cut center)
- G. 1/2 carat tw semi-mount ring (cushion center stone 0.40-0.60 ct.)
- H. 1 carat tw engagement ring (1/2 carat princess cut center)



G\*



H†

\*Center stone sold separately, come see our collection  
 † Engagement ring includes center stone  
 Above Styles can be customized, please call us  
 Some styles available in different carat weights





A'



B'



C'



E'



D'



F'



G'



H'

- A. 5/8 carat tw engagement ring (1/2 carat emerald cut center)
- B. 1/2 carat tw engagement ring (1/4 carat emerald cut center)
- C. 3/4 carat tw semi-mount ring (emerald center stone 0.85-1.20 ct.)
- D. 1 1/5 carat tw semi-mount ring (emerald center stone 1.25-1.75 ct.)
- E. 5/8 carat tw engagement ring (1/4 carat emerald cut center)
- F. 3/8 carat tw engagement ring (1/4 carat emerald cut center)
- G. 7/8 carat tw engagement ring (1/2 carat emerald cut center)
- H. 1/3 carat tw semi-mount ring (emerald center stone 0.85-1.20 ct.)

\*Center stone sold separately, come see our collection  
 †Engagement ring includes center stone  
 Above Styles can be customized, please call us  
 Some styles available in different carat weights





# 6 THREE-STONE RINGS are a perennial favorite

The three stones represent the past, present and future, but the look is getting a modern update with smaller side stones becoming more popular.



- A. 1 carat tw engagement ring (1/2 carat emerald cut center)
- B. 1 carat tw engagement ring (3/4 carat round cut center)
- C. 1 carat tw engagement ring (3/8 carat pear cut center)
- D. 1 1/2 carat tw engagement ring (3/4 carat oval cut center)
- E. 1 carat tw engagement ring (3/8 carat round cut center)
- F. 1 carat tw engagement ring (3/8 carat round cut center)
- G. 1 carat tw engagement ring (3/8 carat oval cut center)



† Engagement ring includes center stone  
Some styles available in different carat weights





A†



B†



C†



D†



E†



G\*



F†

*BDO*  
collection



H†



J†



K†

A. 3/4 carat tw engagement ring  
(1/2 carat emerald cut center)

B. 7/8 carat tw engagement ring  
(1/2 carat oval cut center)

C. 5/8 carat tw engagement ring  
(1/2 carat oval cut center)

D. 3/4 carat tw engagement ring  
(1/2 carat oval cut center)

E. 5/8 carat tw engagement ring  
(1/2 carat round cut center)

F. 7/8 carat tw engagement ring  
(1/2 carat round cut center)

G. 1/3 carat tw semi-mount ring  
(cushion center stone 0.85-1.20 ct.)

H. 5/8 carat tw engagement ring  
(1/2 carat emerald cut center)

J. 3/4 carat tw engagement ring  
(1/2 carat marquise cut center)

K. 3/4 carat tw engagement ring  
(1/2 carat round cut center)

\*Center stone sold separately, come see our collection

†Engagement ring includes center stone

Some styles available in different carat weights





A'



B'



C'

# 7 THE ROUND CUT still outshines all others

The classic round cut maximizes the sparkle of the stone and is still the most popular engagement ring style out there. What's new this year is all about being unique and setting your stone in a gorgeous pave band will give it just the custom look you want.



D\*



F\*



E\*



- A. 3/4 carat tw engagement ring (1/2 carat round cut center)
- B. 3/4 carat tw engagement ring (1/2 carat round cut center)
- C. 1 carat tw engagement ring (1/2 carat round cut center)
- D. 1/2 carat tw semi-mount ring (round center stone 1.00-1.40 ct.)
- E. 1/4 carat tw semi-mount ring (round center stone 0.85-1.20 ct.)
- F. 5/8 carat tw semi-mount ring (round center stone 0.85-1.20 ct.)
- G. 5/8 carat tw engagement ring (1/2 carat round cut center)
- H. 5/8 carat tw engagement ring (1/2 carat round cut center)
- J. 3/8 carat tw semi-mount ring (round center stone 0.85-1.20 ct.)



G'



H'



J\*

\*Center stone sold separately, come see our collection  
 † Engagement ring includes center stone  
 Above Styles can be customized, please call us  
 Some styles available in different carat weights





- A. 5/8 carat tw semi-mount ring (round center stone 1.50-2.00 ct.)
- B. 5/8 carat tw semi-mount ring (round center stone 1.50-2.00 ct.)
- C. 1/2 carat tw semi-mount ring (round center stone 0.85-1.20 ct.)
- D. 3/4 carat tw semi-mount ring (round center stone 0.85-1.20 ct.)
- E. 3/4 carat tw semi-mount ring (round center stone 0.85-1.20 ct.)
- F. 1/2 carat tw semi-mount ring (round center stone 0.85-1.20 ct.)
- G. 1/4 carat tw semi-mount ring (round center stone 1.00-1.40 ct.)
- H. 1/3 carat tw semi-mount ring (round center stone 0.85-1.20 ct.)

\*Center stone sold separately, come see our collection  
 Above Styles can be customized, please call us  
 \* Denotes 18kt Gold





- A. 3/4 carat tw engagement ring (3/8 carat round cut center)
- B. 5/8 carat tw engagement ring (1/2 carat round cut center)
- C. 7/8 carat tw engagement ring (1/2 carat round cut center)
- D. 3/4 carat tw engagement ring (1/2 carat round cut center)
- E. 5/8 carat tw engagement ring (1/2 carat round cut center)
- F. 1 carat tw engagement ring (3/4 carat round cut center)
- G. 7/8 carat tw engagement ring (1/2 carat round cut center)
- H. 3/4 carat tw engagement ring (1/2 carat emerald cut center)
- J. 5/8 carat tw engagement ring (3/8 carat round cut center)



† Engagement ring includes center stone  
 Wedding band sold separately, call us for pricing  
 Some styles Available in different center sizes





# 8 STUNNING, MODERN BRIDAL SETS

More couples are opting for the brilliant idea of purchasing an engagement ring and wedding band as a set that is perfectly coordinated and meant to go together. Plus bridal sets offer value for the money. Buying two or more rings at the same time - instead of buying them separately - is likely to save money.



- A. 5/8 carat tw engagement ring (1/3 carat round cut center)
- B. 3/4 carat tw engagement ring (1/2 carat round cut center)
- C. 1 carat tw engagement ring (1/2 carat oval cut center)
- D. 1/3 carat tw engagement ring (1/4 carat round cut center)
- E. 7/8 carat tw engagement ring (1/2 carat emerald cut center)
- F. 3/4 carat tw engagement ring (3/8 carat pear cut center)
- G. 5/8 carat tw engagement ring (3/8 carat oval cut center)

\* Engagement ring includes center stone  
 Wedding band sold separately, call us for pricing





*BDO*  
collection

- A. 7/8 carat tw engagement ring  
(1/2 carat oval cut center)
- B. 3/8 carat tw engagement ring  
(1/5 carat round cut center)
- C. 1/2 carat tw engagement ring  
(1/4 carat oval cut center)
- D. 3/4 carat tw engagement ring  
(1/4 carat princess cut center)
- E. 3/4 carat tw engagement ring  
(1/4 carat princess cut center)
- F. 3/8 carat tw engagement ring  
(1/4 carat round cut center)
- G. 5/8 carat tw engagement ring  
(1/4 carat round cut center)
- H. 3/8 carat tw engagement ring  
(1/4 carat oval cut center)



† Engagement ring includes center stone  
Wedding band sold separately, call us for pricing  
Some styles available in different center sizes





A



B

## BRIDAL SETS

Meant for each other - choose an engagement ring that matches with the perfect wedding band to look like one elegant piece of jewelry.



C



D



E



F



G



H



J

- A. 1/3 carat tw engagement ring  
(1/5 carat round cut center)
- B. 1/2 carat tw engagement ring  
(1/4 carat round cut center)
- C. 1/2 carat tw engagement ring  
(1/3 carat round cut center)
- D. 3/8 carat tw engagement ring  
(1/4 carat round cut center)
- E. 1/2 carat tw engagement ring  
(1/4 carat round cut center)
- F. 1/3 carat tw engagement ring  
(1/4 carat round cut center)
- G. 1/2 carat tw engagement ring  
(1/4 carat pear cut center)
- H. 1/2 carat tw engagement ring  
(1/4 carat emerald cut center)
- J. 1/2 carat tw engagement ring  
(1/4 carat round cut center)

† Engagement ring includes center stone  
Wedding band sold separately, call us for pricing  
Some styles available in different center sizes





A



B



C

# 9 LOVEBRIGHT ENGAGEMENT RINGS

Our new collection has been meticulously crafted to experience bigger looks and exceptional value - petite diamonds surround the center diamond to add an extra layer of sparkle and brilliance.



D



E



F



LOVEBRIGHT

- A. 3/4 carat tw engagement ring
- B. 1 1/2 carat tw engagement ring
- C. 1 carat tw engagement ring
- D. 1/2 carat tw engagement ring
- E. 1/2 carat tw engagement ring
- F. 5/8 carat tw engagement ring
- G. 5/8 carat tw engagement ring
- H. 3/4 carat tw engagement ring



G

Engagement ring includes center stones halo



H





B



A



C



D



E



F



G



LOVEBRIGHT



H

- A. 1/2 carat tw engagement ring
- B. 1/3 carat tw engagement ring
- C. 1/2 carat tw engagement ring
- D. 5/8 carat tw engagement ring
- E. 3/4 carat tw engagement ring
- F. 1/2 carat tw engagement ring
- G. 1 1/10 carat tw engagement ring
- H. 1 carat tw engagement ring

Engagement ring includes center stones halo





A



B



C

## THE LOVEBRIGHT SOLITAIRE

Simple and elegant, this solitaire-look is timeless.



D



E



F



G



LOVEBRIGHT

- A. 1 carat tw engagement ring
- B. 3/4 carat tw engagement ring
- C. 1/2 carat tw engagement ring
- D. 1/2 carat tw engagement ring
- E. 1 carat tw engagement ring
- F. 1 carat tw engagement ring
- G. 1 carat tw engagement ring
- H. 3/4 carat tw engagement ring
- J. 1/2 carat tw engagement ring

Engagement ring includes center stones halo  
Some styles available in different carat weights



H



J





## THE LOVEBRIGHT THREE-STONE

These modern classics are a wonderful choice for the bride-to-be.



F



H



LOVEBRIGHT



J

- A. 1/2 carat tw engagement ring
- B. 3/4 carat tw engagement ring
- C. 5/8 carat tw engagement ring
- D. 3/4 carat tw engagement ring
- E. 1 carat tw engagement ring
- F. 3/4 carat tw engagement ring
- G. 1/3 carat tw engagement ring
- H. 1/2 carat tw engagement ring
- J. 1/2 carat tw engagement ring

Engagement ring includes center stones halo  
Some styles available in different carat weights





A



B

## THE LOVEBRIGHT THREE-STONE

The Lovebright Collection is a beautiful option for couples looking to share their love without compromising on the expression of love.



C



D



E



F



G



LOVEBRIGHT

- A. 3/4 carat tw engagement ring
- B. 5/8 carat tw engagement ring
- C. 1/2 carat tw engagement ring
- D. 3/4 carat tw engagement ring
- E. 3/8 carat tw engagement ring
- F. 7/8 carat tw engagement ring
- G. 1/3 carat tw engagement ring
- H. 1/2 carat tw engagement ring
- J. 7/8 carat tw engagement ring

Engagement ring includes center stones halo



H



J





A



B



C



E



D

## THE EMERALD CUT LOOK FOR LESS!

These beautiful settings feature brilliant baguette diamonds that create a look of a large rectangular emerald-cut diamond.



F



G



- A. 3/4 carat tw engagement ring
- B. 5/8 carat tw diamond ring
- C. 1 1/6 carat tw diamond ring
- D. 1/2 carat tw engagement ring
- E. 1 carat tw diamond ring
- F. 1 carat tw engagement ring
- G. 1/2 carat tw diamond ring
- H. 1/2 carat tw engagement ring



H

Some styles available in different carat weights





# 10 ETERNITY & MULTI-STONE BANDS

One of the top choices for wedding and anniversary bands. They're also ideal as meaningful gifts for a special occasion or to mark a major milestone in life.



- A. 1 carat tw 5stone halo band
- B. 1 carat tw 5stone halo band
- C. 1 carat tw 5stone halo band
- D. 1 carat tw 5stone halo band
- E. 5/8 carat tw diamond band
- F. 5/8 carat tw diamond band
- G. 1 carat tw diamond band
- H. 1/2 carat tw diamond band
- J. 1 carat tw diamond band
- K. 1 carat tw curve band
- L. 1/6 carat tw diamond band
- M. 1/3 carat tw diamond band
- N. 1/2 carat tw diamond band



Some styles available in different carat weights





A



B



C



D



E



F



G



H



J



K

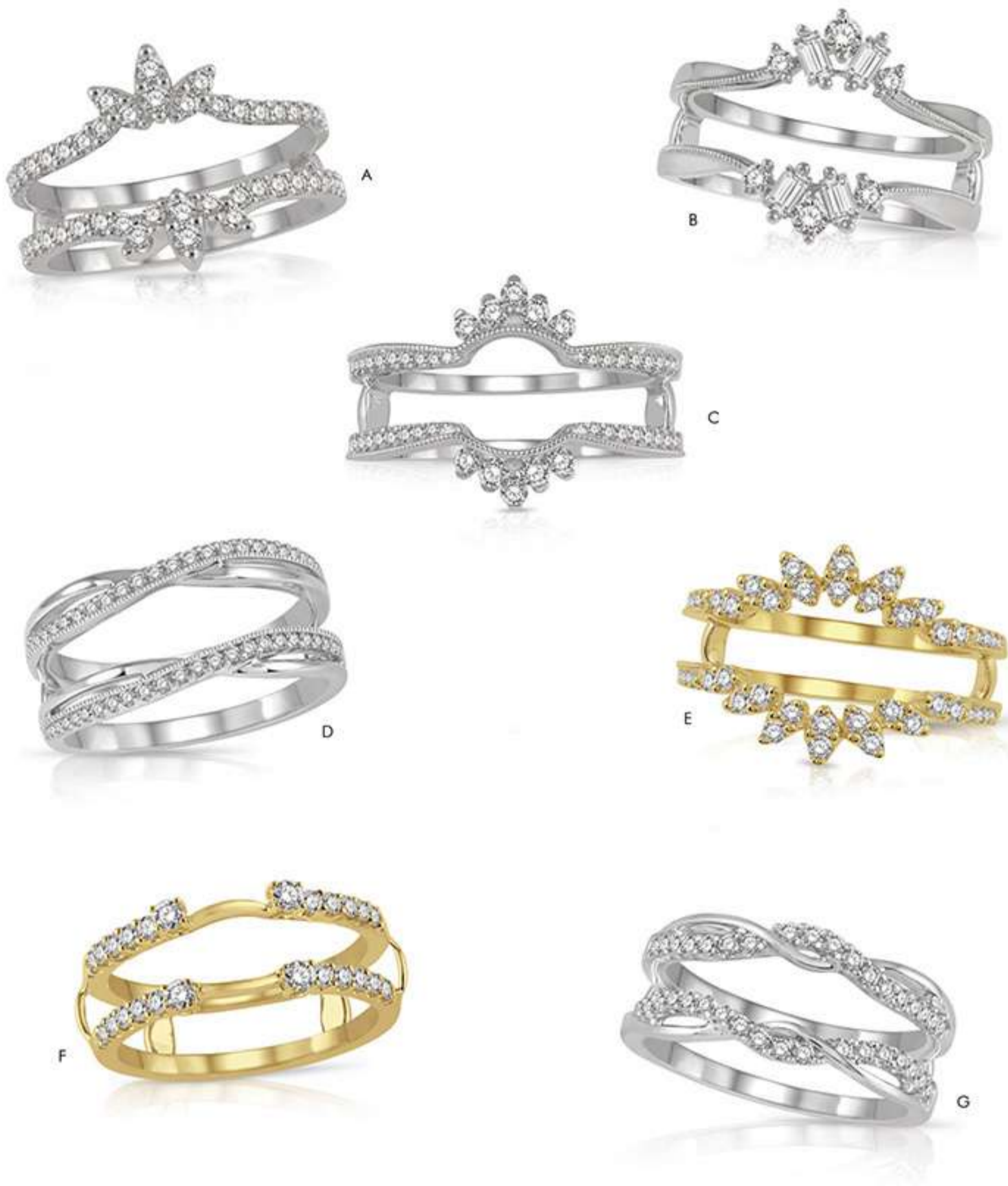


L

- A. 3 carat tw eternity diamond band
- B. 3 carat tw eternity diamond band
- C. 3 carat tw eternity diamond band
- D. 3 carat tw eternity diamond band
- E. 1 1/4 carat tw diamond band
- F. 1 carat tw 11 stones band
- G. 1/4 carat tw pave band
- H. 1 carat tw 7 stones band
- J. 1 carat tw milgrain band
- K. 1 1/2 carat tw 5 stones band
- L. 1 carat tw channel-set band

Some styles available in different carat weights





- A. 1/2 carat tw diamond insert
- B. 3/8 carat tw diamond insert
- C. 1/3 carat tw diamond insert
- D. 1/4 carat tw diamond insert
- E. 1/2 carat tw diamond insert
- F. 1/2 carat tw diamond insert
- G. 3/8 carat tw diamond insert
- H. 1/3 carat tw diamond insert







A



B



C



D

# 11 DIAMOND RING ENHANCERS

Ring jackets are made to be paired with an engagement ring to create a lot more sparkle and a more dramatic stacked silhouette. They're a great way to give an original engagement ring a brand new look.



E† with Engagement Ring



E



F

- A. 1/2 carat tw diamond insert
- B. 1/3 carat tw diamond insert
- C. 1/3 carat tw diamond insert
- D. 1/3 carat tw diamond insert
- E. 1/2 carat tw diamond insert
- F. 1/3 carat tw diamond insert

†Engagement ring sold separately, call us for pricing





A



B



C



D



E



F

### *Engagement Wraps e<sup>3</sup> Enhancers*

- A. 1/2 carat tw diamond insert
- B. 1/2 carat tw diamond insert
- C. 1/2 carat tw diamond insert
- D. 1/2 carat tw diamond insert
- E. 3/4 carat tw diamond insert
- F. 5/8 carat tw diamond insert
- G. 1/2 carat tw diamond insert



G







A



B



C



D

## A GREAT WAY TO UP THE GLIMMER.

These beautiful diamond enhancers feature brilliant baguette and round-cut diamonds combining for a bigger look.



E<sup>1</sup> with Engagement Ring



E

### *Engagement Wraps & Enhancers*

- A. 1/2 carat tw diamond insert
- B. 1/3 carat tw diamond insert
- C. 1 carat tw diamond insert
- D. 3/4 carat tw diamond insert
- E. 5/8 carat tw diamond insert
- F. 5/8 carat tw diamond insert



F

<sup>1</sup>Engagement ring sold separately, call us for pricing





A



B



C



D



E

## Chevron Bands



F



G



H



J



K



L

- A. 1/4 carat tw chevron band
- B. 1/10 carat tw chevron band
- C. 1/3 carat tw chevron band
- D. 1/3 carat tw chevron band
- E. 1/4 carat tw chevron band
- F. 1/8 carat tw chevron band
- G. 3/8 carat tw chevron band
- H. 1/5 carat tw chevron band
- J. 1/5 carat tw chevron band
- K. 1/4 carat tw chevron band
- L. 1/4 carat tw chevron band
- M. 1/6 carat tw chevron band
- N. 1/6 carat tw chevron band
- P. 1/10 carat tw chevron band
- Q. 1/5 carat tw chevron band



M



N



P



Q







# 12 STACKING BANDS are trending in bridal jewelry

Match your engagement ring with a complimentary band to create a unique look and get some extra bling. Choose from a wide range of styles to find the perfect fit for you - and add as many as you like.



## Stackable Bands



- A. 1/5 carat tw stack band
- B. 1/10 carat tw stack band
- C. 1/4 carat tw stack band
- D. 1/6 carat tw twisted band
- E. 1/10 carat tw stack band
- F. 1/10 carat tw stack band
- G. 3/8 carat tw stack band
- H. 1/10 carat tw stack band
- J. 1/5 carat tw stack band
- K. 1/10 carat tw stack band
- L. 1/2 carat tw stack band
- M. 1/6 carat tw stack band
- N. 1/10 carat tw stack band
- P. 1/10 carat tw stack band
- Q. 1/5 carat tw twisted band





# AND DON'T FORGET THE BRIDAL PARTY!

Give your bridesmaid squad something they're going to wear and treasure forever.



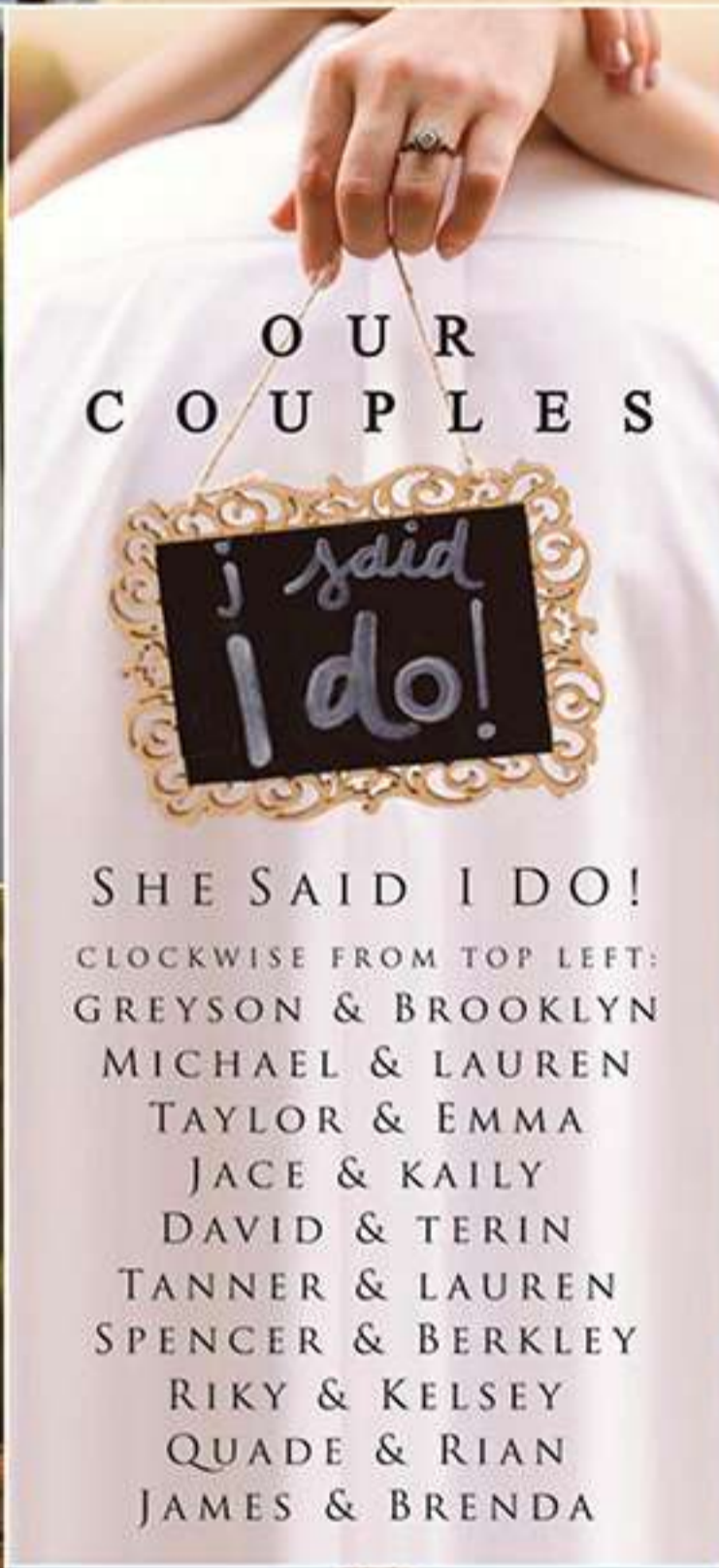
## *Gifts from the Heart*

- A. 1/8 carat tw diamond pendant
- B. 1/5 carat tw diamond pendant
- C. 1/4 carat tw diamond pendant
- D. Pearl & diamond pendant
- E. Pearl & diamond pendant
- F. 1/10 carat tw round station necklace
- G. 1/3 carat tw halo pendant
- H. 1/3 carat tw halo earrings
- J. 3/8 carat tw heart earrings
- K. 1/5 carat tw heart pendant
- L. 1/6 carat tw kite drop earrings
- M. 1/6 carat tw round drop earrings
- N. 1/6 carat tw star drop earrings
- P. 1/6 carat tw round station bracelet
- Q. 1/6 carat tw heart station bracelet
- R. 1/6 carat tw kite station bracelet

\* Denotes 10kt Gold







**SHE SAID I DO!**  
 CLOCKWISE FROM TOP LEFT:  
 GREYSON & BROOKLYN  
 MICHAEL & LAUREN  
 TAYLOR & EMMA  
 JACE & KAILY  
 DAVID & TERIN  
 TANNER & LAUREN  
 SPENCER & BERKLEY  
 RIKY & KELSEY  
 QUADE & RIAN  
 JAMES & BRENDA







**POWELL JEWELRY**  
LUXURY JEWELRY • CUSTOM ENGAGEMENT RINGS

2441 N. Maize Road, Suite 201  
Wichita, KS 67205  
Ph.: (316)-729-0040



SCAN ON YOUR SMART PHONE OR LOG ONTO  
[www.powelljewelry.net](http://www.powelljewelry.net)

# INSIDE: *12* ENGAGEMENT RING TRENDS TO SAY "I DO" TO!

Whether you have the ring of your dreams in mind or are just starting to collect ideas, these latest trends will help you decide.



*Nobody Does  
I DO  
Like We Do!*

**\$250  
OFF**

On any style in this catalog above \$2,500.  
Cannot be combined with any other offer.

Bring this Coupon into the Store to redeem this offer

Jewelry images shown may have been enlarged or retouched to show details. Prices shown may change without notice due to market conditions and fluctuations. Diamond carat total weight (ctw) represents the approximate carat total weight of all the diamonds set, unless noted. Diamond total weights may vary between 0.01 and 0.07 ct. All pendants priced with chains. Natural colored diamonds may have been treated or enhanced by heating or irradiation. Natural colored gemstones may have been treated or enhanced by heating, irradiation, oiling, filling, or diffusion. Photographic, typographical, and print errors are subject to correction. Some styles featured in the catalog may not be immediately available, but may be ordered.