

HOLIDAY

Wish Book

Bilori Jewelers

"The Unusual in Fine Jewelry"

BULOVA



A
Precisionist
1/1000th of a second and
continuous-sweep second hand
\$796.00



B
Sutton Classic
Gold-Tone Stainless Steel Case
\$540.00



C
Fly Me To The Moon
Incorporating Vintage Bulova Designs
\$850.00



D
Marine Star
Six-Hand Chronograph Function With Calendar
\$460.00



E
Marine Star
Rose Gold Tone Stainless Steel
Case With Blue Tone Outer Ring
\$500.00



F
ORD-362171



H
ORD-362168

G
ORD-362170





NEW!
Scatter Jewelry

Holiday **DIAMOND GIFTS**



*Diamond Halo
Collection*

M, N, P available in 1/8 carat tw, 1/4 carat tw,
1/3 carat tw, 1/2 carat tw, 3/4 carat tw & 1.00 carat tw



J

Diamond Fashion



K



L



M



N



P



Q

- A. 1/3 carat tw scatter necklace B. 1/4 carat tw scatter ring C. 1/2 carat tw scatter necklace D. 1/2 carat tw tear drop earrings
E. 1/4 carat tw scatter earrings F. 5/8 carat tw zig-zag band G. 1 carat tw zig-zag hoop earrings H. 3 carat tw zig-zag bracelet
J. 1/2 carat tw zig-zag band K. 1/2 carat tw zig-zag earrings L. 1/3 carat tw zig-zag pendant M. halo ring 1/4 carat tw, 1/2 carat tw, 1 carat tw
N. halo pendant 1/4 carat tw, 1/2 carat tw, 1 carat tw P. halo earrings 1/4 carat tw, 1/2 carat tw, 1 carat tw Q. 1 3/4 carat tw bar link bracelet



Open Link Designs



EXCLUSIVE



Diamond Curb Link Collection



Diamond Ensembles



*EXCLUSIVELY OURS
PAPERCLIP Collection*

A. 1 1/2 carat tw open link necklace B. 1/5 carat tw open link ring C. 1 carat tw open link bracelet D. 1/10 carat tw open link ring
E. 3/4 carat tw open link bracelet F. 1/3 carat tw curb link pendant G. 1 carat tw curb link bracelet H. 1/6 carat tw curb link ring J. 1/3 carat tw curb link hoop earrings K. 1/2 carat tw pave set heart pendant L. 1/2 carat tw pave set cross pendant M. 1/6 carat tw paper clip earrings N. 1/4 carat tw paper clip necklace P. 1/5 carat tw paper clip ring Q. 1 carat tw paper clip bracelet



GO FOR THE BOLD

Our pavé cuffs, bangles, rings, and hoops pair beautifully with our other collections.



Bracelets & Bangles



Paper Clip Jewelry



A. 1/2 carat tw pavé set circle pendant B. 1/5 carat tw pavé set claw ring C. 1/2 carat tw pavé set band D. 1 carat tw pavé set hoop earrings E. 2 carat tw bracelet F. 1 carat tw bracelet G. 1 carat tw stackable bangle H. 1 carat tw straight line bracelet J. 1/2 carat tw bangle K. 1 carat tw floral bracelet L. 2 carat tw bracelet M. pavé set bangle 1 carat tw 2 carat tw N. 1/2 carat tw claw cuff bangle P. 1/5 carat tw paper clip earrings Q. 1/3 carat tw paper clip earrings R. 1/10 carat tw paper clip ring S. 1 carat tw paper clip bracelet T. 1/10 carat tw paper clip necklace

* Denotes 10kt Gold





EXCLUSIVELY OURS

Stud Earrings
Collection

F,G,H available in 1 ctw to 10 ctw



J to P available in 1/4 ctw,
1/2 ctw, 3/4 ctw & 1.00 ctw

Diamond Basics



R to U available in 1/10 ctw, 1/4 ctw,
1/3 ctw, 1/2 ctw, 3/4 ctw & 1.00 ctw

A. 1 carat tw tennis earrings B. smile necklace 1/4 carat tw, 1/2 carat tw C. 3 carat tw tennis necklace D. stud earrings collection starting from E. 1 carat tw inside out hoop earrings F. 3 carat tw tennis bracelet G. 3 carat tw tennis bracelet H. 3 carat tw round tennis bracelet J. clover necklace 1/4 carat tw, 1/2 carat tw K. cross pendant 1/4 carat tw, 1/2 carat tw L. infinity necklace 1/4 carat tw, 1/2 carat tw M. chevron necklace 1/4 carat tw, 1/2 carat tw N. heart pendant 1/4 carat tw, 1/2 carat tw P. circle of love pendant 1/4 carat tw, 1/2 carat tw Q. pavé band 1/4 carat tw, 1/2 carat tw R. channel-set band 1/4 carat tw, 1/2 carat tw S. classic band 1/4 carat tw, 1/2 carat tw T. prong-set band 1/4 carat tw, 1/2 carat tw U. milgrain band 1/4 carat tw, 1/2 carat tw





Circle & Heart Collection



ONE-OF-A-KIND DIAMOND MEMENTOS

Create a unique look that reflects your personality and style. There are no rules when stacking jewelry.



DIAMOND STACK BANDS



A. circle necklace 1/4 carat tw, 1/2 carat tw B. heart necklace 1/4 carat tw, 1/2 carat tw C. circle necklace 1/4 carat tw, 1/2 carat tw
 D. 1 carat tw 5 stone emerald band E. 3/4 carat tw fashion band F. 1 carat tw 5 stone oval band G. 1/4 carat tw oval pendant
 H. 1/4 carat tw oval ring J. 1/2 carat tw double row pendant K. 1 carat tw double row earrings L. 1/3 carat tw drop pendant M. 1/3 carat tw diamond band
 N. 1/4 carat tw stackable band P. 3/8 carat tw cross over ring Q. 5/8 carat tw diamond band R. 3/4 carat tw fashion band S. 1/2 carat tw fashion band T. 1/2 carat tw fashion band



Trending:
Layering necklaces and bracelets has become as iconic as wearing a Little Black Dress.

Wear-anywhere pieces are ideal for stacking.



Station Bracelets



Pieces she'll never take off, nothing expresses love like a gift of diamonds.



Diamond Pendants

A. round station necklace 1/4 carat tw 1/2 carat tw 1 carat tw B. 1/4 carat tw drop station necklace C. 1/10 carat tw icicle station necklace D. 2 carat tw trio diamond necklace E. 1/8 carat tw bar bracelet F. 1/5 carat tw "XO" bracelet G. 1/8 carat tw round station bracelet H. 1/4 carat tw baguette station bracelet J. 1/5 carat tw bezel bracelet K. 1/6 carat tw heart station bracelet L. 1/6 carat tw cushion station bracelet M. 1/10 carat tw arrow necklace N. 1/6 carat tw bar necklace P. 1/8 carat tw bar necklace Q. 1/6 carat tw heart necklace R. 1/4 carat tw heart necklace S. 1/5 carat tw star necklace



Something cherished close to your heart



A. 1/10 carat tw angel wing cross pendant B. 1/10 carat tw heart pendant C. 1/4 carat tw cross pendant D. 1/8 carat tw double heart pendant E. 1/5 carat tw cross pendant F. 1/6 carat tw heart pendant G. 1/6 carat tw cross pendant H. 1/10 carat tw cross pendant J. 1/4 carat tw twin heart necklace K. 1/10 carat tw cross pendant L. 1/12 carat tw mom heart pendant M. 1/10 carat tw cross pendant N. 1/10 carat tw heart pendant P. 1/8 carat tw angel wing cross pendant Q. Personalized Initials starting at R. 1/8 carat tw drop pendant S. 1/6 carat tw twisted circle pendant T. 1/10 carat tw double circle necklace U. 1/6 carat tw sunburst pendant

All styles shown on this page are 10kt Gold



STACKED WITH STYLE *There are no rules, pile on as many shimmering bands as you like!*



A



B*



C*



D*

Diamond Bands



E

F

G

H

J



K

L*

M

N*

P

Q

Diamond Bands



R

S

U*

T

V

W

X

Y

Diamond Bands



Z

AA

AB

AC

AD

A. 3/8 carat tw wrap ring B. 1/4 carat tw wrap ring C. 1/10 carat tw twist ring D. 1/8 carat tw twist ring E. 1/3 carat tw two row diamond band F. 1/10 carat tw stack diamond band G. 1/3 carat tw graduated diamond band H. 1/5 carat tw stack band J. 1/10 carat tw paper clip band K. 1/8 carat tw stack band L. 1/5 carat tw diamond band M. 1/10 carat tw stack band N. 1/10 carat tw diamond band P. 1/5 carat tw twisted band Q. 1/6 carat tw diamond band R. 1/10 carat tw stack diamond band S. 1/4 carat tw twisted diamond band T. 1/4 carat tw twisted diamond band U. 1/10 carat tw diamond band V. 1/4 carat tw paper clip band W. 1/10 carat tw stack band X. 1/10 carat tw stack diamond band Y. 1/8 carat tw twisted diamond band Z. 1 carat tw fashion band AA. 3/4 carat tw three row band AB. 1 1/4 carat tw three row diamond band AC. 1 1/2 carat tw fashion band AD. 3/8 carat tw fashion band





PETITE COLLECTION

Celebrate the season with butterflies, bows, bees, and the moon and the stars.



G*



J*



L*



H*



K*



M*



N*



P*



Q*



R*



S*



T*



U*



V*



W*



X*



Y



Z*



AA



AB



AC*



AD*



AE



AF

A. 1/10 carat tw leaf pendant B. 1/20 carat tw crescent moon pendant C. 1/10 carat tw star pendant D. 1/10 carat tw bezel pendant
 E. 1/10 carat tw horseshoe pendant F. 1/20 carat tw bumble bee pendant G. 1/10 carat tw star ring H. 1/10 carat tw clover ring
 J. 1/20 carat tw bumble bee ring K. 1/10 carat tw bezel diamond ring L. 1/10 carat tw horseshoe ring M. 1/8 carat tw cushion ring N. 1/10
 carat tw huggies P. 1/5 carat tw huggies Q. 1/8 carat tw huggies R. 1/6 carat tw huggies S. Pearl and diamond huggies T. 1/10 carat tw
 huggies U. 1/10 carat tw bolt earrings V. 1/5 carat tw butterfly earrings W. 1/10 carat tw clover earrings X. 1/10 carat tw anchor earrings
 Y. 3/4 carat tw graduated earrings Z. 1/10 carat tw earring climbers AA. 3/4 carat tw graduated earrings AB. 1/3 carat tw huggie earrings
 AC. 1/8 carat tw hoop earrings AD. 1/6 carat tw hoop earrings AE. 1/3 carat tw hoop earrings AF. 1/3 carat tw huggie earrings

ELLE

the Parisians' lifestyle

JEWELRY



A.

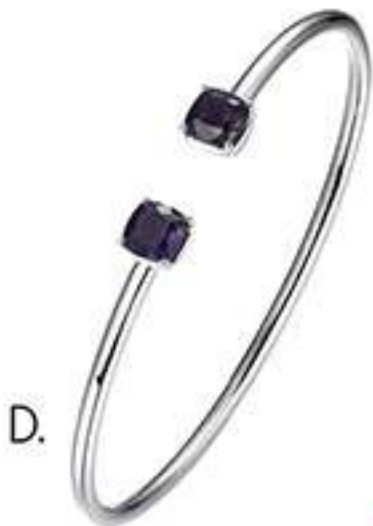


B.



C.

Caramel Collection
from \$69



D.



E.



F.

COLORFUL GEMSTONES



G.



H.



I.



J.



K.



L.



M.

A.RI0268W6-\$69 B.NI0267W-\$129 C.EI0267W-\$149 D.BI0292WA-\$129 E.NI0292WA-\$119 F.BI0292WT-\$129
G.NI0264W-\$99 H.BI0264W-\$89 I.EI0264W-\$69 J.NI0230WDS18-\$120 K.NI0309-\$100 L.NI0228WDS18-\$115
M.EI0228WDS-\$95



Gemstone Jewelry



Diamond & Gemstone Bracelets



Gemstone Bands

A. Sapphire and diamond pendant B. Sapphire and diamond ring C. Ruby and diamond pendant D. Sapphire and diamond pendant
 E. Ruby and diamond pendant F. Sapphire and diamond ring G. Ruby and diamond ring H. Sapphire and diamond ring J. Aquamarine and diamond ring
 K. Emerald and diamond ring L. Sapphire and diamond bracelet M. Emerald and diamond bracelet N. Sapphire and diamond bracelet
 P. Ruby and diamond bracelet Q. Sapphire and diamond bracelet R. Ruby and diamond bracelet S. Ruby and diamond band
 T. Sapphire and diamond band U. Emerald and diamond band V. Sapphire and diamond band

* Denotes 10kt Gold





What's New: Sterling silver is a favorite among trendsetters and it mixes well with other metals.



Diamond Bracelets

A. 1/10 carat tw paper clip pendant B. 1/10 carat tw heart paper clip pendant C. 1/6 carat tw paper clip bracelet D. 1/10 carat tw paper clip ring E. 1/10 carat tw paper clip hoop earrings F. blue topaz and diamond ring G. blue topaz and diamond pendant H. blue topaz and diamond earrings J. amethyst and diamond ring K. amethyst and diamond pendant L. diamond angel wing earrings M. diamond angel wing pendant N. amethyst and diamond bracelet P. blue topaz and diamond bracelet Q. amethyst and diamond bracelet R. blue topaz and diamond bracelet S. diamond cross lariat bracelet T. diamond infinity lariat bracelet U. diamond bar lariat bracelet



Make the Season Sparkle

This holiday season, share the love with the gift of Lafonn jewelry. Each piece is exquisitely made with simulated diamonds and fancy lab-grown sapphires and simulated turquoise set in sterling silver bonded with platinum or plated in gold.

A. N0238CLP \$330 | B. E0511CLP \$255 | C. B0168CLP \$310 | D. B0143CLP \$230
 E. E0503CLP \$200 | F. N0254CLP17 \$675 | G. P0267TQG \$325 | H. R0462TQG \$305 | I. SYN010GP \$345
 J. SYR009GP \$330 | K. R0465CLP \$215 | L. R0465CLG \$215 | M. B0177CLP \$510 | N. B0177CLG \$530

Bilori Jewelers

"The Unusual in Fine Jewelry"



the knot

23 Diamond Spring Road Denville, NJ 07834

973-664-1995 • 973-664-1998

Repairs done on premises • Lay-a-way Available



www.bilorijewelers.com



Holiday Sweepstakes



ENTER TO
WIN

This beautiful Scatter
Diamond Necklace
valued at over
\$1,649



Nothing says **LOVE** like Jewelry!

10%
OFF

On any style in this catalog
Discount valid till Dec. 25, 2022
Cannot be combined with any other Offer

Jewelry images shown may have been enlarged or retouched to show details. Prices shown may change without notice due to market conditions and fluctuations. Diamond carat total weight (ctw) represents the approximate carat total weight of all the diamonds set, unless noted. Diamond total weights may vary between 0.01 and 0.07 ct. All pendants priced with chains. Natural colored diamonds may have been treated or enhanced by heating or irradiation. Natural colored gemstones may have been treated or enhanced by heating, irradiation, oiling, filling, or diffusion. Photographic, typographical, and print errors are subject to correction. Some styles featured in the catalog may not be immediately available, but may be ordered.