

# HOLIDAY

*Wish Book*

*Rummele's*

FINE JEWELRY | SINCE 1889

[www.rummeles-jewelry.com](http://www.rummeles-jewelry.com)



**What's New:** Yellow gold is making a major return. This warm metal is a neutral style staple that can be worn with everything.



A. 3/4 carat tw bar link earrings    B. 1 7/8 carat tw bar link necklace    C. 1 carat tw bar link bracelet    D. 1/5 carat tw pendant  
 E. 1/4 carat tw pendant    F. 1/5 carat tw pendant    G. 1/8 carat tw pendant    H. 7 stone band 1/2 carat tw, 1 carat tw    J. smile necklace 1/2 carat tw, 1 carat tw    K. 1 carat tw halo hoop earrings    L. 3 stone necklace 1/2 carat tw, 1 carat tw    M. 3/4 carat tw pear necklace  
 N. 1/4 carat tw oval pendant    P. 1/3 carat tw oval ring    Q. 1/4 carat tw oval earrings





**NEW!**  
*Scatter Jewelry*

*Holiday* **DIAMOND GIFTS**



*Diamond Halo  
Collection*

M, N, P available in 1/8 carat tw, 1/4 carat tw,  
1/3 carat tw, 1/2 carat tw, 3/4 carat tw & 1.00 carat tw

*Diamond Fashion*

- A. 1/3 carat tw scatter necklace    B. 1/4 carat tw scatter ring    C. 1/2 carat tw scatter necklace    D. 1/2 carat tw tear drop earrings  
E. 1/4 carat tw scatter earrings    F. 5/8 carat tw zig-zag band    G. 1 carat tw zig-zag hoop earrings    H. 3 carat tw zig-zag bracelet  
J. 1/2 carat tw zig-zag band    K. 1/2 carat tw zig-zag earrings    L. 1/3 carat tw zig-zag pendant    M. halo ring 1/4 carat tw, 1/2 carat tw,  
1 carat tw    N. halo pendant 1/4 carat tw, 1/2 carat tw, 1 carat tw    P. halo earrings 1/4 carat tw, 1/2 carat tw, 1 carat tw    Q. 1 3/4 carat  
tw bar link bracelet



*Open Link Designs*



*EXCLUSIVE*



*Diamond Curb Link Collection*



*Diamond Ensembles*



*EXCLUSIVELY OURS  
PAPERCLIP Collection*

A. 1 1/2 carat tw open link necklace B. 1/5 carat tw open link ring C. 1 carat tw open link bracelet D. 1/10 carat tw open link ring  
 E. 3/4 carat tw open link bracelet F. 1/3 carat tw curb link pendant G. 1 carat tw curb link bracelet H. 1/6 carat tw curb link ring J. 1/3 carat tw curb link hoop earrings  
 K. 1/2 carat tw pave set heart pendant L. 1/2 carat tw pave set cross pendant M. 1/6 carat tw paper clip earrings N. 1/4 carat tw paper clip necklace P. 1/5 carat tw paper clip ring Q. 1 carat tw paper clip bracelet



## GO FOR THE BOLD

*Our pavé cuffs, bangles, rings, and hoops pair beautifully with our other collections.*



### *Bracelets & Bangles*



### *Paper Clip Jewelry*



A. 1/2 carat tw pave set circle pendant B. 1/5 carat tw pave set claw ring C. 1/2 carat tw pave set band D. 1 carat tw pave set hoop earrings E. 2 carat tw bracelet F. 1 carat tw bracelet G. 1 carat tw stackable bangle H. 1 carat tw straight line bracelet J. 1/2 carat tw bangle K. 1 carat tw floral bracelet L. 2 carat tw bracelet M. pave set bangle 1 carat tw 2 carat tw N. 1/2 carat tw claw cuff bangle P. 1/5 carat tw paper clip earrings Q. 1/3 carat tw paper clip earrings R. 1/10 carat tw paper clip ring S. 1 carat tw paper clip bracelet T. 1/10 carat tw paper clip necklace

\* Denotes 10kt Gold





*EXCLUSIVELY OURS*

Stud Earrings  
Collection

F,G,H available in 1 ctw to 10 ctw



J to P available in 1/4 ctw,  
1/2 ctw, 3/4 ctw & 1.00 ctw

*Diamond Basics*



R to U available in 1/10 ctw, 1/4 ctw,  
1/3 ctw, 1/2 ctw, 3/4 ctw & 1.00 ctw

A. 1 carat tw tennis earrings B. smile necklace 1/4 carat tw, 1/2 carat tw C. 3 carat tw tennis necklace D. stud earrings collection starting from E. 1 carat tw inside out hoop earrings F. 3 carat tw tennis bracelet G. 3 carat tw tennis bracelet H. 3 carat tw round tennis bracelet J. clover necklace 1/4 carat tw, 1/2 carat tw K. cross pendant 1/4 carat tw, 1/2 carat tw L. infinity necklace 1/4 carat tw, 1/2 carat tw M. chevron necklace 1/4 carat tw, 1/2 carat tw N. heart pendant 1/4 carat tw, 1/2 carat tw P. circle of love pendant 1/4 carat tw, 1/2 carat tw Q. pavé band 1/4 carat tw, 1/2 carat tw R. channel-set band 1/4 carat tw, 1/2 carat tw S. classic band 1/4 carat tw, 1/2 carat tw T. prong-set band 1/4 carat tw, 1/2 carat tw U. milgrain band 1/4 carat tw, 1/2 carat tw





*Circle & Heart Collection*



**ONE-OF-A-KIND DIAMOND MEMENTOS**

Create a unique look that reflects your personality and style. There are no rules when stacking jewelry.



**DIAMOND STACK BANDS**



A. circle necklace 1/4 carat tw, 1/2 carat tw B. heart necklace 1/4 carat tw, 1/2 carat tw C. circle necklace 1/4 carat tw, 1/2 carat tw  
 D. 1 carat tw 5 stone emerald band E. 3/4 carat tw fashion band F. 1 carat tw 5 stone oval band G. 1/4 carat tw oval pendant  
 H. 1/4 carat tw oval ring J. 1/2 carat tw double row pendant K. 1 carat tw double row earrings L. 1/3 carat tw drop pendant M. 1/3  
 carat tw diamond band N. 1/4 carat tw stackable band P. 3/8 carat tw cross over ring Q. 5/8 carat tw diamond band R. 3/4 carat tw  
 fashion band S. 1/2 carat tw fashion band T. 1/2 carat tw fashion band



**Trending:**  
Layering necklaces  
and bracelets has become  
as iconic as wearing a  
Little Black Dress.

*Wear-anywhere  
pieces are ideal  
for stacking.*



*Station  
Bracelets*



*Pieces she'll never take off,* nothing expresses love like a gift of diamonds.



*Diamond Pendants*

A. round station necklace 1/4 carat tw 1/2 carat tw 1 carat tw B. 1/4 carat tw drop station necklace C. 1/10 carat tw icicle station necklace D. 2 carat tw trio diamond necklace E. 1/8 carat tw bar bracelet F. 1/5 carat tw "XO" bracelet G. 1/8 carat tw round station bracelet H. 1/4 carat tw baguette station bracelet J. 1/5 carat tw bezel bracelet K. 1/6 carat tw heart station bracelet L. 1/6 carat tw cushion station bracelet M. 1/10 carat tw arrow necklace N. 1/6 carat tw bar necklace P. 1/8 carat tw bar necklace Q. 1/6 carat tw heart necklace R. 1/4 carat tw heart necklace S. 1/5 carat tw star necklace





*Something cherished close to your heart*



A. 1/10 carat tw angel wing cross pendant B. 1/10 carat tw heart pendant C. 1/4 carat tw cross pendant D. 1/8 carat tw double heart pendant E. 1/5 carat tw cross pendant F. 1/6 carat tw heart pendant G. 1/6 carat tw cross pendant H. 1/10 carat tw cross pendant J. 1/4 carat tw twin heart necklace K. 1/10 carat tw cross pendant L. 1/12 carat tw mom heart pendant M. 1/10 carat tw cross pendant N. 1/10 carat tw heart pendant P. 1/8 carat tw angel wing cross pendant Q. Personalized Initials starting at R. 1/8 carat tw drop pendant S. 1/6 carat tw twisted circle pendant T. 1/10 carat tw double circle necklace U. 1/6 carat tw sunburst pendant

All styles shown on this page are 10kt Gold



**STACKED WITH STYLE** *There are no rules, pile on as many shimmering bands as you like!*



A



B\*



C\*



D\*

*Diamond Bands*



E

F

G

H

J



K

L\*

M

N\*

P

Q

*Diamond Bands*



R

S

U\*

T

V

W

X

Y

*Diamond Bands*



Z

AA

AB

AC

AD

A. 3/8 carat tw wrap ring B. 1/4 carat tw wrap ring C. 1/10 carat tw twist ring D. 1/8 carat tw twist ring E. 1/3 carat tw two row diamond band F. 1/10 carat tw stack diamond band G. 1/3 carat tw graduated diamond band H. 1/5 carat tw stack band J. 1/10 carat tw paper clip band K. 1/8 carat tw stack band L. 1/5 carat tw diamond band M. 1/10 carat tw stack band N. 1/10 carat tw diamond band P. 1/5 carat tw twisted band Q. 1/6 carat tw diamond band R. 1/10 carat tw stack diamond band S. 1/4 carat tw twisted diamond band T. 1/4 carat tw twisted diamond band U. 1/10 carat tw diamond band V. 1/4 carat tw paper clip band W. 1/10 carat tw stack band X. 1/10 carat tw stack diamond band Y. 1/8 carat tw twisted diamond band Z. 1 carat tw fashion band AA. 3/4 carat tw three row band AB. 1 1/4 carat tw three row diamond band AC. 1 1/2 carat tw fashion band AD. 3/8 carat tw fashion band





## PETITE COLLECTION

*Celebrate the season with butterflies, bows, bees, and the moon and the stars.*



A. 1/10 carat tw leaf pendant B. 1/20 carat tw crescent moon pendant C. 1/10 carat tw star pendant D. 1/10 carat tw bezel pendant  
 E. 1/10 carat tw horseshoe pendant F. 1/20 carat tw bumble bee pendant G. 1/10 carat tw star ring H. 1/10 carat tw clover ring  
 J. 1/20 carat tw bumble bee ring K. 1/10 carat tw bezel diamond ring L. 1/10 carat tw horseshoe ring M. 1/8 carat tw cushion ring N. 1/10  
 carat tw huggies P. 1/5 carat tw huggies Q. 1/8 carat tw huggies R. 1/6 carat tw huggies S. Pearl and diamond huggies T. 1/10 carat tw  
 huggies U. 1/10 carat tw bolt earrings V. 1/5 carat tw butterfly earrings W. 1/10 carat tw clover earrings X. 1/10 carat tw anchor earrings  
 Y. 3/4 carat tw graduated earrings Z. 1/10 carat tw earring climbers AA. 3/4 carat tw graduated earrings AB. 1/3 carat tw huggie earrings  
 AC. 1/8 carat tw hoop earrings AD. 1/6 carat tw hoop earrings AE. 1/3 carat tw hoop earrings AF. 1/3 carat tw huggie earrings

***Eco-Drive. | Purposeful Power***

The sustainable way to power her watch.  
No batteries required.



**CITIZEN**

BETTER STARTS NOW

AVAILABLE AT

**RUMMELE'S FINE JEWELRY**

MANITOWOC, WI

[www.rummeles-jewelry.com](http://www.rummeles-jewelry.com)

“Doing something new.  
That’s the adventure.”

— Adventurer, Naomi Uemura

Keep Going Forward

 **PROSPEX**



**SEIKO**

SINCE 1881

AVAILABLE AT  
RUMMELE'S FINE JEWELRY  
MANITOWOC, WI  
[www.rummeles-jewelry.com](http://www.rummeles-jewelry.com)



**What's New:** Sterling silver is a favorite among trendsetters and it mixes well with other metals.



*Diamond Bracelets*

A. 1/10 carat tw paper clip pendant B. 1/10 carat tw heart paper clip pendant C. 1/6 carat tw paper clip bracelet D. 1/10 carat tw paper clip ring E. 1/10 carat tw paper clip hoop earrings F. blue topaz and diamond ring G. blue topaz and diamond pendant H. blue topaz and diamond earrings J. amethyst and diamond ring K. amethyst and diamond pendant L. diamond angel wing earrings M. diamond angel wing pendant N. amethyst and diamond bracelet P. blue topaz and diamond bracelet Q. amethyst and diamond bracelet R. blue topaz and diamond bracelet S. diamond cross lariat bracelet T. diamond infinity lariat bracelet U. diamond bar lariat bracelet



*Diamond Pendants*



## SPECTACULAR SILVER GIFTS

*Diamonds and pearls in varying shapes and sizes can all be set in silver, making it a very affordable luxury. Here are some value-packed gift ideas.*



A. diamond heart arrow pendant B. diamond snow flake pendant C. diamond cross pendant D. diamond heart pendant E. diamond cross pendant F. diamond infinity cross pendant G. diamond twin heart pendant H. diamond cross pendant J. pearl and diamond ring K. pearl and diamond earrings L. pearl and diamond pendant M. pearl and diamond ring N. pearl and diamond pendant P. pearl and diamond earrings Q. pearl and diamond earrings R. pearl and diamond pendant S. mini diamond heart hoops T. mini diamond heart ring U. mini diamond heart pendant V. mini diamond heart bracelet

All styles shown on this page are Sterling Silver



# Rummele's

FINE JEWELRY | SINCE 1889

4101 Calumet Ave  
Manitowoc, WI 54220-5400  
(920) 684-5225

[www.rummeles-jewelry.com](http://www.rummeles-jewelry.com)

**HOLIDAY HOURS**  
Monday-Saturday 9am-6pm  
Sunday 11am-4pm



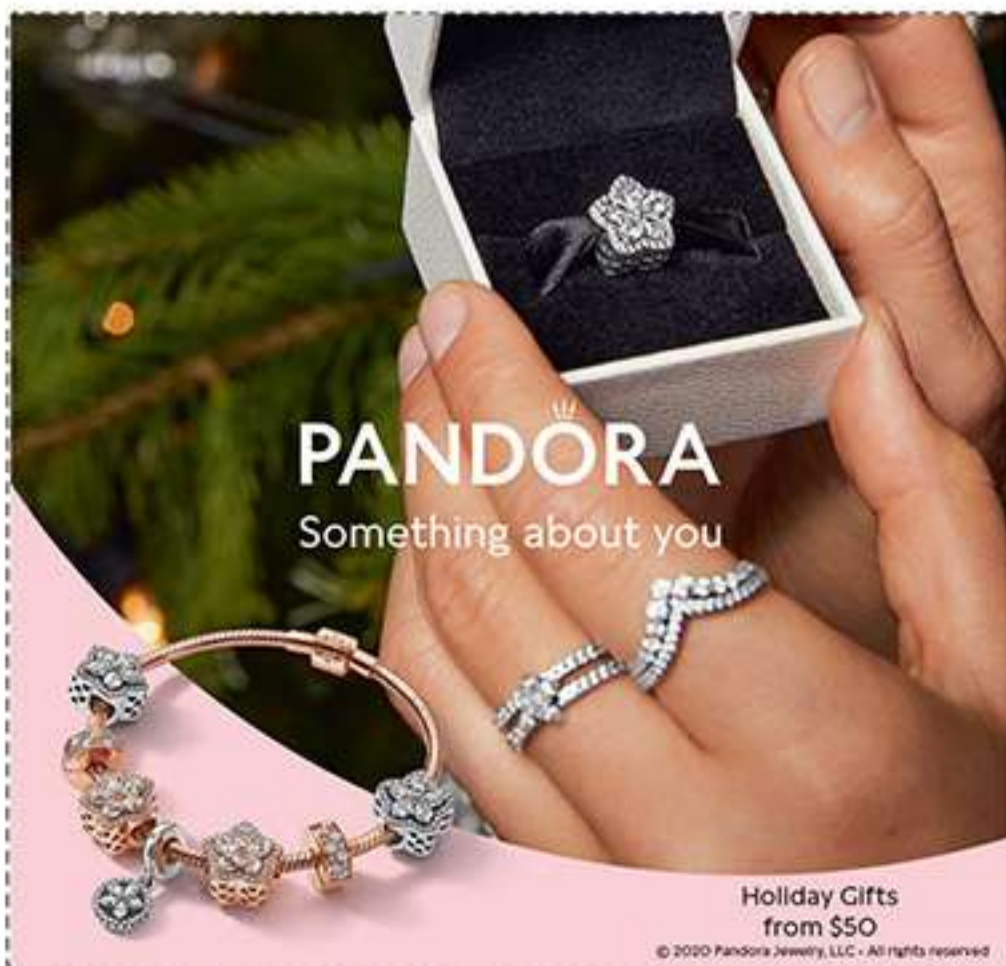
## Holiday Sweepstakes

ENTER TO



**WIN**

This beautiful Lovebright  
Diamond Stud Earrings  
valued at over  
\$1,299



**PANDORA**  
Something about you

Holiday Gifts  
from \$50

© 2020 Pandora Jewelry, LLC - All rights reserved

AVAILABLE AT  
**RUMMELE'S FINE JEWELRY**  
MANITOWOC, WI  
[www.rummeles-jewelry.com](http://www.rummeles-jewelry.com)

Jewelry images shown may have been enlarged or retouched to show details. Prices shown may change without notice due to market conditions and fluctuations. Diamond carat total weight (ctw) represents the approximate carat total weight of all the diamonds set, unless noted. Diamond total weights may vary between 0.01 and 0.07 ct. All pendants priced with chains. Natural colored diamonds may have been treated or enhanced by heating or irradiation. Natural colored gemstones may have been treated or enhanced by heating, irradiation, oiling, filling, or diffusion. Photographic, typographical, and print errors are subject to correction. Some styles featured in the catalog may not be immediately available, but may be ordered.